



E-ISSN: 2706-8927  
P-ISSN: 2706-8919  
[www.allstudyjournal.com](http://www.allstudyjournal.com)  
IJAAS 2024; 6(6): 122-126  
Received: 24-03-2024  
Accepted: 28-04-2024

**Rajlaxmi Sharaff**  
Assistant Professor,  
Botany Department,  
Govt. College, Barpali,  
Korba, Chhattisgarh, India

## Seed germination and dormancy of *Sida rhombifolia* L

**Rajlaxmi Sharaff**

DOI: <https://doi.org/10.33545/27068919.2024.v6.i6b.1252>

### Abstract

The effects of seed scarification, temperature, light, salt, osmotic stress, and pH on seed germination, as well as the impacts of seed burial depth on *Sida rhombifolia* seedling emergence, were assessed by experiments. Sulfuric acid scarification caused seeds to come out of dormancy and accelerated germination; however, light had no effect on the germination of scarified seeds. Compared to non-scarified seeds, which germinated at a rate of 5%, seeds treated with sulfuric acid for 120 minutes produced 65% of the seeds. The response to scarification indicates that a hard seed coat is the primary mechanism restricting germination. In two separate experiments, a concentration of 111 mM sodium chloride and an osmotic potential of -0.49 MPa reduced maximum germination (64 to 65%) of *S. rhombifolia* by 50%. Germination was not influenced by the pH of buffered solutions ranging from 5 to 9, and it varied from 60 to 65% over this range. Seedling emergence was greater than 60% at burial depths of 0.5 to 2 cm, but decreased thereafter, and no seedlings emerged from the seeds buried at 8 cm. The results of this study identify some of the factors enabling *S. rhombifolia* to be a widespread and problematic weed in the humid tropics and provide information that may contribute to its control.

**Keywords:** Effect, treatment, breaking dormancy, seeds

### Introductions

Wastelands are home to *Sida rhombifolia*, commonly known as *Sida orientalis*. The herb's tall, woody leaves are clearly identifiable due to their rhomboid lanceolate shape. The Sanskrit name for the plant is Mahabala. The mucilaginous stems are used internally as a diuretic, emollient, and febrifuge when combined with pepper. The roots have an anthelmintic, bitter, and cooling effect.

The awns on many fruits and high stem fibre content cause *S. rhombifolia* to be highly undesirable in pastures. The awned mericarps that contaminate grain crops can also injure livestock when used in ration and young leaves may be poisonous (Holm *et al.*, 1997) <sup>[10]</sup>. In addition, the weed is an alternate host of nematodes and insects (Galinato *et al.*, 1999) <sup>[9]</sup>. These studies suggest that *S. rhombifolia* is a troublesome weed in the humid tropics as it infests a wide range of crops, it is poisonous to livestock, it is an alternate host for pests, and as such it can be a serious problem for farmers.

Several environmental factors, including temperature, light, soil salinity, pH and moisture, and seed burial depth influence weed seed germination. Some information about the germination requirements of *S. rhombifolia* is available for populations in the United States (Smith *et al.*, 1992) <sup>[12]</sup>, but little is available for Asian populations. Our findings show that germination of *S. rhombifolia* is very low unless the seeds are scarified, but the previous study (Smith *et al.*, 1992) <sup>[12]</sup> did not mention whether the seeds used were scarified or not. Information on the environmental conditions necessary for weed germination and emergence is important for a better understanding of the nature of potential weed problems and development of weed control strategies. The objectives of this study, therefore, were to determine the effects of seed scarification, temperature, light, salt and osmotic stress, and pH on seed germination, and also the effects of seed burial depth on seedling emergence of *S. rhombifolia*.

### Materials and Methods

Seeds of *S. rhombifolia* were collected in May 2023 from many plants selected at random around the margins of several fields around College of Agriculture and research station Korba (C.G.). Seeds from many plants were bulked, cleaned and stored in a laboratory at room temperature (approximately 25 °C) until used in the experiments.

**Corresponding Author:**  
**Rajlaxmi Sharaff**  
Assistant Professor,  
Botany Department,  
Govt. College, Barpali,  
Korba, Chhattisgarh, India

**Germination Tests:** Twenty-five seeds of *S. rhombifolia* were placed uniformly in each 9-cm-diameter petri dish containing 5 ml of distilled water or a treatment solution and double layer of filter papers (Whatman No. 1). Chemically scarified (120 min with sulphuric acid, H<sub>2</sub>SO<sub>4</sub>) seeds were used, unless otherwise specified. Seeds were washed in running tap water for 5 min before performing experiments with them. Seeds were incubated in light/dark (12 h/12 h) condition at 35/25 °C (day/night temperature), unless otherwise stated. Germination was determined after 14 days, at which time seeds with an emerged radicle were considered to have germinated.

**Effect of Seed Scarification on Germination:** Experiments were conducted to investigate whether germination in this species was inhibited by an impermeable seed coat. Seeds were scarified with concentrated H<sub>2</sub>SO<sub>4</sub> at different time intervals (0, 5, 10, 30, 60, 120, and 180 min). Seeds were then incubated as described above and germination determined.

#### Effect of Temperature and Light on Germination

To determine the effect of temperature and light on germination, H<sub>2</sub>SO<sub>4</sub> scarified seeds of *S. rhombifolia* were incubated under three different alternating day/night temperatures (35/25, 30/20 and 25/15 °C) in two light regimes [light/dark (12 h/12 h) and continuous dark (24 h)]. In the dark treatment, the dishes were wrapped in a double layer of aluminium foil.

**Effect of Salt Stress on Germination:** To determine the effect of salt stress on germination, H<sub>2</sub>SO<sub>4</sub> scarified seeds of *S. rhombifolia* were incubated in 0, 25, 50, 100, 150, 200 and 250 mM sodium chloride (NaCl) solutions. Germination was determined as described previously.

**Effect of Osmotic Potential on Germination:** To evaluate the effect of osmotic stress, solutions with osmotic potentials of 0, 0.1, -0.2, -0.4, -0.6, -0.8 and -1.0 MPa were prepared by dissolving polyethylene glycol 8000 in distilled water as described by Michel (1983) [11]. Chemically scarified seeds were used in this experiment, and germination was determined as previously described.

**Effect of pH on Germination:** The influence of pH on the germination of *S. rhombifolia* seeds was determined by using buffer solutions of pH 5 to 9 (Chauhan and Johnson, 2008a) [4] together with a control treatment as distilled water of pH 6.2. Chemically scarified seeds were used in this experiment, and germination was determined as mentioned previously.

#### Effect of Seed Burial Depth on Seedling Emergence

The effect of seed burial depth on seedling emergence of *S. rhombifolia* was studied in a screenhouse (a chamber framed with 2-mm iron mesh and overhead transparent PVC cover to prevent rain damage) by placing 50 chemically scarified seeds in soil within 15-cm-diameter plastic pots. Seeds were placed on the soil surface or covered to depths of 0.5, 1, 2, 4, 6, 8 and 10 cm with soil. Soil with a pH of 6.2 and 1.3% organic carbon was passed through a 0.3-cm sieve and autoclaved before the pots were filled and commencing the experiment. Pots were subirrigated to maintain sufficient soil moisture. Seedlings were considered emerged when a cotyledon could be seen, and the experiment was terminated when no further emergence was recorded for a continuous 7-day interval.

#### Statistical Analysis

All laboratory and screenhouse experiments were conducted in a randomized complete block design. Treatments of each experiment were replicated three times, each experiment was conducted twice, and the data were combined for analyses. Regression analysis (Sigma Plot 10.0) was used where appropriate; otherwise, means were separated using least significant difference (LSD) at P=0.05 (GENSTAT 8.0).

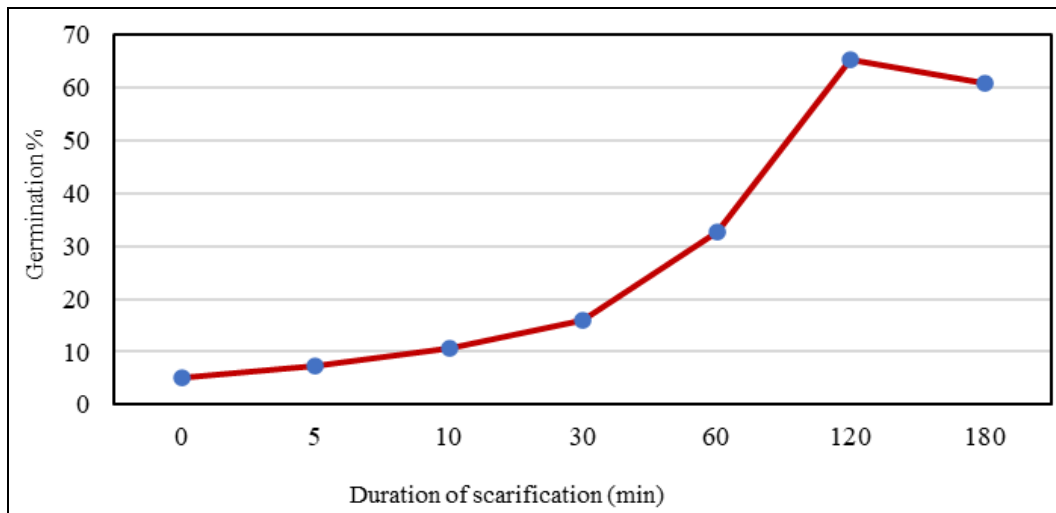
#### Results and Discussion

##### Effect of Seed Scarification on Germination

Chemical scarification with H<sub>2</sub>SO<sub>4</sub> released *S. rhombifolia* seeds from dormancy and stimulated ( $p < 0.001$ ) germination. Germination increased with increased duration of scarification with H<sub>2</sub>SO<sub>4</sub> up to 120 min (Table 1). Seeds treated with H<sub>2</sub>SO<sub>4</sub> for 120 min resulted in 65% germination compared with 5% for non-scarified seeds.

**Table 1:** Effect of duration of scarification with concentrated sulphuric acid on germination of *Sida rhombifolia* seeds after 14 days of incubation in light/dark (12 h/12 h) regime at 35/25 °C alternating day/night temperature

S. No.	Duration of scarification (min)	Germination (%)
1.	0	5.2
2.	5	7.4
3.	10	10.6
4.	30	16.0
5.	60	32.6
6.	120	65.4
7.	180	60.8
	LSD (P = 0.05)	11.5



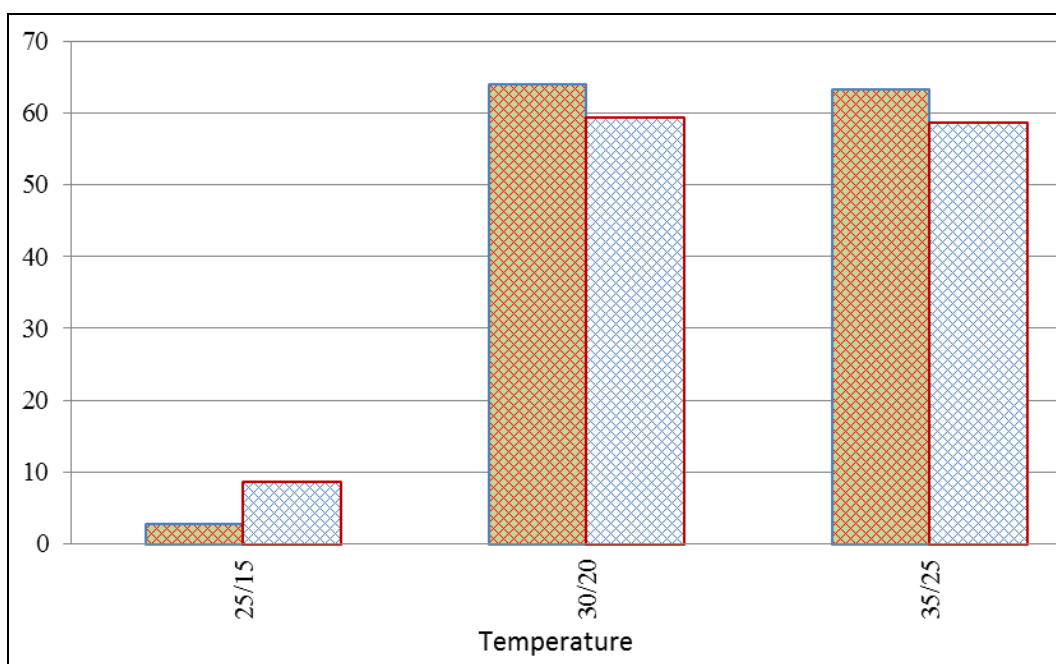
**Fig 1:** Effect of duration of scarification with concentrated sulphuric acid on germination of *Sida rhombifolia*

Scarification increases germination, suggesting that *S. rhombifolia*'s hard seed coat is the main cause of dormancy. Scarification-induced germination stimulation may result via enhanced imbibition or the seed coat's physical liberation from constraint. Alternatively, seeds can be scarified by shattering the seed coat, soaking in hot water for a short while, or abrasion with sand paper; however, these techniques were not tested. The results suggest that seeds are unlikely to germinate in the field unless scarified and therefore seeds of this species may persist in the soil for a long time, causing problem in future crops if scarification does not take place. Scarification in the field may occur due to temperature fluctuations, soil acids, incomplete predation by insects, fungi, bacteria and rodents, passage through the digestive tract of animals, abrasion by soil particles, and

vegetation burning (Baskin and Baskin, 1998; Taylor, 2005) [1, 14]. Germination of *Malva parviflora* L. (little mallow), another species of Malvaceae family, was also stimulated by seed scarification (Chauhan *et al.*, 2006b) [7].

**Table 2:** Effect of alternating day/night temperatures (12 h/12 h) and light on germination of chemically scarified seeds of *Sida rhombifolia*

S. No.	Temperature	Germination (%)	
		Light	Dark
1.	25/15	2.76	8.8
2.	30/20	64.0	59.4
3.	35/25	63.3	58.7
LSD (p = 0.05)		10.9	



**Fig 2:** Effect of alternating day/night temperatures (12 h/ 12 h) and light on germination of chemically scarified seeds of *Sida rhombifolia*

**Effect of temperature and light on germination**

Germination of chemically scarified seeds was influenced ( $p < 0.001$ ) by the interaction between temperature and light (Table 2). At the higher temperatures, seed germination was not influenced by the light conditions. At the lowest

temperature, however, germination was significantly lower in light/dark (3%) than in the dark (59%). This result indicates that germination of *S. rhombifolia* is inhibited by light at suboptimal temperatures. Similar results have been reported for other species (Chauhan *et al.*, 2006a) [6].

Similar germination response to light at higher temperatures suggests that seeds of *S. rhombifolia* could germinate whether buried in soil or exposed to light.

### Effect of Salt Stress on Germination

A sigmoid response was observed in germination with increases in NaCl concentrations from 0 to 200 mM. Germination of chemically scarified seeds was greater than 55% upto the concentration of 50 mM NaCl; however, germination did not occur at 200 mM or greater concentration. As estimated from the fitted model, the concentration required for 50% inhibition of maximum germination was 111 mM NaCl. Soils with more than 100 mM NaCl (~electrical conductivity 10 mmhos/cm) are known with high level of salt content (Tanji and Kielen, 2002) [13], and our results indicate that seeds of *S. rhombifolia* may germinate in these saline soils. Crop cultivation, therefore, may be limited not only by salinity but also by weed competition.

### Effect of Osmotic Potential on Germination

Germination of H<sub>2</sub>SO<sub>4</sub> scarified seeds decreased linearly with decreasing osmotic potential from 0 to -1.0 MPa. Germination decreased from 64 to 25% as osmotic potential decreased from 0 to -0.6 MPa, and germination did not occur at -1.0 MPa. The osmotic potential required for 50% inhibition of maximum germination was -0.49 MPa. In contrast to *S. rhombifolia*, germination in *M. parviflora* was completely inhibited at an osmotic potential of -0.6 MPa (Chauhan *et al.*, 2006b) [7]. Such comparisons suggest that *S. rhombifolia* could germinate under moderate waterstress conditions.

### Effect of pH of Buffered Solution on Germination

Germination of H<sub>2</sub>SO<sub>4</sub> scarified seeds of *S. rhombifolia* was not significantly affected ( $P=0.91$ ) by the tested range of pH solutions, and it varied from  $60 \pm 3.7\%$  to  $65 \pm 4.5\%$  over the pH range of 5 to 9. The results indicate that *S. rhombifolia* may germinate in many soil types used for growing most of the field crops in tropical countries. An optimum pH level is required during germination and growth of plants, but many weed species are tolerant of extreme pH levels (Evetts and Burnside, 1972) [8].

### Effect of Seed Burial Depth on Seedling Emergence

Seed burial depth influenced ( $p<0.001$ ) seedling emergence of *S. rhombifolia*, though seedlings emerged from all burial depths ranging from 0 to 6 cm. Fifty-one per cent of the seedlings emerged from the seeds placed on the soil surface. Emergence was greater than 60% at burial depths of 0.5 to 2 cm, but decreased thereafter. Seedlings did not emerge from the seed burial depth of 8 cm or greater.

Decreased seedling emergence due to increased burial depth has been reported in several weed species (Chauhan *et al.*, 2006b; Chauhan and Johnson, 2008b) [7, 5] which could be linked to seed energy reserves. Larger seeds with greater carbohydrate reserves can emerge from greater depths of burial (Baskin and Baskin, 1998) [1]. On the other hand, small-seeded species such as *S. rhombifolia* may have insufficient energy reserves to support hypocotyl elongation from deeper depths. Previous studies suggest that decreased germination at depth may be due to raised CO<sub>2</sub> derived from soil biological activity and slower gas diffusion, which is inversely correlated with burial depth (Benvenuti and

Macchia, 1995) [2]. Similar results were reported for *Malva pusilla* Sm. (round-leaved mallow) and *M. parviflora*, with the greatest emergence occurring from 0.5 to 2 cm, with emergence declining from 3 to 6 cm, and no emergence occurred at 8 cm (Blackshaw, 1990; Chauhan *et al.*, 2006b) [3, 7].

In conclusion, seed scarification promoted *S. rhombifolia* germination, suggesting that the hard seed coat is the main cause of germination inhibition in this species. Results also suggest that seeds are unlikely to germinate in the field unless scarified and therefore seeds of this species may persist in the soil for a long time. Light did not affect germination at the higher temperatures (30/20 to 35/25 °C), indicating that the addition of no-till systems will not affect the aspect of light exposure. Shallow burial depths were ideal for seedling emergence, suggesting that cultivation techniques that accomplish shallow seed burial could encourage increased *S. rhombifolia* seedling emergence. Conversely, if subsequent tillage is shallow to prevent the potential of bringing the seeds back towards the soil surface, deep-tillage operations that bury the seeds below the maximal zone of emergence (i.e., 8 cm) would suppress emergence.

### Acknowledgement

The author is greatly indebted to Principal and Head of Botany Deptt. of Govt. College, Barpali, Distt. Korba, Chhattisgarh, India (C.G.) who permitted to carry out this work.

### References

1. Baskin CC, Baskin JM. Seeds: Ecology, biogeography, and evolution of dormancy and germination. San Diego, CA: Academic Press; c1998. p. 606.
2. Benvenuti S, Macchia M. Hypoxia effect on buried weed seed germination. *Weed Res.* 1995;35:343-351.
3. Blackshaw RE. Influence of soil temperature, soil moisture, and seed burial depth on the emergence of round-leaved mallow (*Malva pusilla*). *Weed Sci.* 1990;38:518-521.
4. Chauhan BS, Johnson DE. Germination ecology of goosegrass (*Eleusine indica*): An important grass weed of rainfed rice. *Weed Sci.* 2008a;56:699-706.
5. Chauhan BS, Johnson DE. Seed germination and seedling emergence of giant sensitive plant (*Mimosa invisa*). *Weed Sci.* 2008b;56:244-248.
6. Chauhan BS, Gill G, Preston C. African mustard (*Brassica tournefortii*) germination in southern Australia. *Weed Sci.* 2006a; 54:891-897.
7. Chauhan BS, Gill G, Preston C. Factors affecting seed germination of little mallow (*Malva parviflora*) in southern Australia. *Weed Sci.* 2006b; 54:1045-1050.
8. Evetts LL, Burnside OC. Germination and seedling development of common milkweed and other species. *Weed Sci.* 1972; 20:371-378.
9. Galinato MI, Moody K, Piggitt CM. Upland rice weeds of South and South-East Asia. Makati City (Philippines): International Rice Research Institute; c1999. p. 156.
10. Holm L, Doll J, Holm E, Pancho J, Herberger J. World weeds: Natural histories and distribution. New York: John Wiley & Sons, Inc.; c1997.
11. Michel BE. Evaluation of the water potentials of solutions of polyethylene glycol 8000 both in the

- absence and presence of other solutes. *Plant Physiol.* 1983;72:66-70.
12. Smith CA, Shaw DR, Newsom LJ. Arrowleaf sida (*Sida rhombifolia*) and prickly sida (*Sida spinosa*): germination and emergence. *Weed Res.* 1992;32:103-109.
  13. Tanji KK, Kielen NC. Agricultural drainage water management in arid and semi-arid areas. FAO Irrigation and Drainage Paper 61. Rome: Food and Agriculture Organization of the United Nations; c2002.
  14. Taylor GB. Hardseededness in Mediterranean annual pasture legumes in Australia. *Aust. J Agric. Res.* 2005;56:645-661.